



FIGURATIVE INDUSTRIES

WE BELIEVE IN QUALITY



# FIGURATIVE INDUSTRY CATALOG



[www.figurativeindustries.com](http://www.figurativeindustries.com)



FIGURATIVE INDUSTRIES

# MEN CASUAL HOODIE



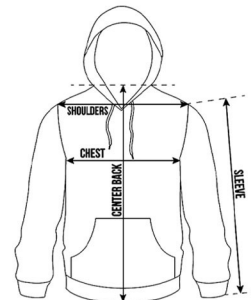
## FEATURES AND BENEFIT

- Get Your Custom Design & Fabric
- Imported
- Pull On closure
- Machine wash it again and again without hesitation because it's pill-resistant
- Double-needle stitching on the neck and hems for durability

**Sizes:** Small Medium Large XI Large XXI Large

**Colors:**

## SIZE CHART



In Inches	S	M	L	XL	XXL
Chest	40	42	44	46	48
Length	25	26	27	28	29
Sleeve	24	25	26	27	28
Shoulder	17	18	19	20	21

Sizes may rarely vary in the range of +/- 0.5 inches





FIGURATIVE INDUSTRIES

# WOMEN CROPTOP HOODIES



## FEATURES AND BENEFIT

- Get Your Custom Design & Fabric.
- Imported
- Pull On closure
- Machine Wash
- Double needle construction for durability
- Sleeve Type: Long Sleeve
- Classic reverse weave crew; cropped for fashion fit

**Sizes:**

**Colors:**



**Note:** Please pay attention to the size in the size chart and purchase the right size of clothing according to the size chart.

Size Chart				
SIZE (UNIT: inch)	Length	Bust	Sleeve Length	Shoulder
XS	17.7	37.8	22.0	16.9
S	18.1	40.2	22.4	17.3
M	18.5	42.5	22.8	17.7
L	20.1	44.9	23.2	19.1
XL	20.5	47.2	23.6	19.5



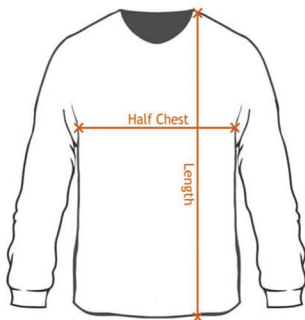
FIGURATIVE INDUSTRIES

# MEN SWEATSHIRTS



## FEATURES AND BENEFIT

### SIZE CHART



STANDARD CREW NECK SWEAT

Adults	Sizes	S	M	L	XL	XXL	3XL	4XL	5XL
	Width	55	58	61	64	68	72	75	78
	Length	70	73	75	77	79	80	81	82

- Get Your Custom Design & Fabric
- Imported
- Pull On closure
- Machine Wash Cold, Only Non-Chlorine Bleach when needed, Tumble Dry Low, Medium Iron
- Ribbed collar, cuffs, and waistband that hold their shape

Large Large Medium Small **Sizes:**

Colors:





FIGURATIVE INDUSTRIES

# WOMEN FITNESS VEST



## FEATURES AND BENEFIT

Size	Bust	Shoulder	Length
S	38cm	23cm	57.5cm
M	40cm	24cm	59.5cm
L	42cm	25cm	61.5cm
XL	44cm	26cm	63.5cm

The above data is measured by tiling clothes.



- Get Your Custom Design & Fabric
- Imported
- Pull On closure
- Signature slub jersey with a light, silky texture
- Signature slub jersey with a light, silky texture

Color, Size and Design :**CUSTOMIZED**



FIGURATIVE INDUSTRIES

# MEN TRACKSUIT



## FEATURES AND BENEFIT

## SIZE CHART

in centimeters		S	M	L	XL	XXL
TOP	A - length	70	72	74	76	78
	B - chest	55	58	61	64	67
	C - waist	44	47	50	53	56
BOTTOM	C - waist	38	40	42	44	46
	D - thigh	33	34	35	36	37
	E - calf	13	13.5	14	14.5	15
	F - outside leg	103	104	105	106	107

- Get Your Custom Design & Fabric
- Imported
- Machine Wash
- Brand New Mens Tracksuit Which is
- New in Fashion
- Customization Available
- Long Sleeve, Hooded, Fleece, Color
- Drawstring,

XI Large

Large

Medium

Small

Sizes:



Colors:





FIGURATIVE INDUSTRIES

# WOMEN TRACKSUIT



## FEATURES AND BENEFIT

- Get Your Custom Design & Fabric
- Imported
- Machine Wash
- Brand New Women Tracksuit Which is New in Fashion
- Customization Available
- Long Sleeve, Hooded, Fleece, Color Drawstring,

**Sizes:** Small Medium Large XI Large

**Colors:**

## SIZE CHART

in centimeters		S	M	L	XL	XXL
TOP	A - length	70	72	74	76	78
	B - chest	55	58	61	64	67
	C - waist	44	47	50	53	56
BOTTOM	C - waist	38	40	42	44	46
	D - thigh	33	34	35	36	37
	E - calf	13	13.5	14	14.5	15
	F - outside leg	103	104	105	106	107



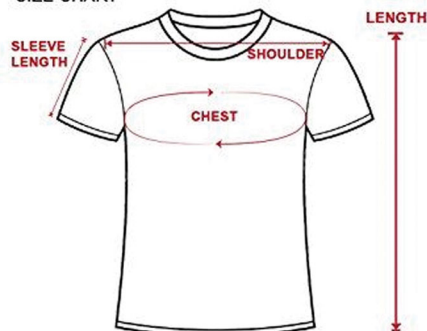
FIGURATIVE INDUSTRIES

# MEN CASUAL T SHIRTS



## FEATURES AND BENEFIT

MEN T-SHIRT - Round Neck  
SIZE CHART



SIZE	CHEST	WAIST	SLEEVE LENGTH	SHOULDER WIDTH	PRODUCT LENGTH
S	38	38	7.5	17.0	26
M	40	40	8	17.5	27
L	42	42	8.5	18.5	28
XL	44	44	9	19.0	29
XXL	46	46	10	20.0	30
XXXL	48	48	10.5	21.0	31
XXXXL	50	50	11	21.5	32

Measurements given are in Inches\*  
Measurements may vary by  $\pm 5\%$  all around

Get Your Custom Design & Fabric

- Imported
- Machine Wash
- Lightweight, breathable cotton jersey that feels great against the body
- Tough construction means it will keep looking great, wash after wash

XI Large

Large

Medium

Small

Sizes:

4XL Large

3XL Lar2e

XXL Large



Colors:





## A woman with long brown hair is wearing a black t-shirt. The t-shirt features a graphic print of two stylized figures wearing sunglasses. The figure on the left is wearing a dark jacket, and the figure on the right is wearing a light-colored jacket. A small circular logo is visible on the left chest area. The woman is standing with her hands clasped in front of her.

## A diagram of a light purple t-shirt with a crew neck and short sleeves. Three measurement lines are shown: a horizontal line across the chest labeled 'CHEST', a vertical line from the top of the neck to the bottom hem labeled 'LENGTH', and a horizontal line across the bottom hem labeled 'BOTTOM WIDTH'.



FIGURATIVE INDUSTRIES

# WOMEN POLO SHIRTS



## FEATURES AND BENEFIT

- Get Your Custom Design & Fabric.
- Button closure
- Machine Wash.
- Flat knit collar and cuffs
- Classic short sleeve
- Metal buttons with dyed-to-match plastic rims
- Double-needle armhole seams and hem

**Sizes:**

Small

Medium

Large

XL Large

2XL Large

3XL Large

**Colors:**



	S	M	L	XL	2XL	3XL
CHEST	34	36	38	40	42	44
LENGTH	24	25	26	27	28	30

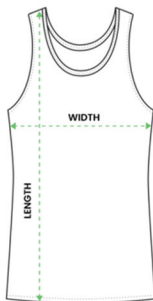
in Inches





FIGURATIVE INDUSTRIES

# MEN CASUAL TANKTOP



US SIZE	LENGTH		WIDTH	
Unit	Inch	Cm	Inch	Cm
S	27.5	69.9	18.5	47.0
M	28.5	72.4	20.0	50.8
L	29.0	73.7	22.0	55.9
XL	30.0	76.2	23.0	58.4
2XL	30.5	77.5	24.5	62.2

- Get Your Custom Design & Fabric
- Imported
- Machine Wash
- Fits close to the body for fitted, slim silhouette
- Smooth and comfortable lightweight jersey fabric
- Crew neckline

XI Large

Large

Medium

Small

Sizes:

2XL Large

XXL Large



Colors:



FIGURATIVE INDUSTRIES

# WOMEN CASUAL TANKTOP



## FEATURES AND BENEFIT

- Get Your Custom Design & Fabric.
- Button closure
- Machine Wash.
- Machine Wash
- Slightly tailored fit through the waist
- Soft, lightweight and breathable rib knit fabric with stretch
- Straight hem

Sizes:

Small

Medium

Large

XL Large

2XL Large

Colors:



## Size Chart

DISTRICT MADE DM138L  
WOMEN'S PERFECT TRI RACERBACK TANK



SIZE	WIDTH	LENGTH
XS	15 1/4	26
S	16 1/4	26 1/2
M	17 1/4	27
L	18 3/4	27 3/4
XL	20 1/4	28 1/2
2XL	22	29

\*MEASUREMENTS IN INCHES





FIGURATIVE INDUSTRIES

# CASUAL MEN TROUSER



## SIZE INFORMATION

SIZE	WAIST		HIP		LENGTH	
	CM	INCH	CM	INCH	CM	INCH
S	79 — 96	31.126 — 37.824	110	43.34	104	40.976
M	83 — 100	32.702 — 39.4	114	44.916	106	41.764
L	88 — 105	34.672 — 41.37	119	46.886	108	42.552
XL	93 — 110	36.642 — 43.34	124	48.856	110	43.34
XXL	98 — 115	38.612 — 45.31	129	50.826	112	44.128

## FEATURES AND BENEFIT

- Get Your Custom Design & Fabric.
- Imported.
- Button closure.
- Belt closure.

Occasion: Suit for daily life, casual, lounge, work, home, yoga, sleeping, beach, great for hot summer days. makes it comfortable and stress-free during your any activities.

XL, 2XL Large

Large

Medium

Small

Sizes:



Colors:





FIGURATIVE INDUSTRIES

# CASUAL SHORTS



## FEATURES AND BENEFIT

- Get Your Custom Design & Fabric.
- Drawstring closure / Button closure
- Machine Wash.
- Elastic waistband with adjustable internal drawstring for a custom fit
- Men's Casual & Comfortable Short Pants with Pockets, Perfect for Leisure Outgoing Daily Wear

**Sizes:**

Small

Medium

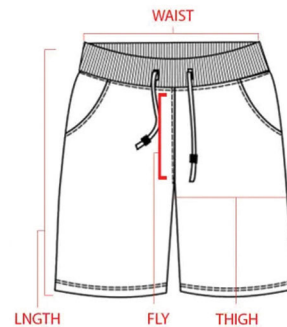
Large

XL Large

2XL Large

3XL Large

**Colors:**



Size	A (Waist)	B (Hip)	C (Inseam)
S	11 3/4"	14 1/2"	9 1/2"
M	12 3/4"	15 1/2"	9 3/4"
L	13 3/4"	16 1/2"	10"
XL	14 3/4"	17 1/2"	10 1/4"
2XL	15 3/4"	18 1/2"	10 1/2"





FIGURATIVE INDUSTRIES



[www.figurativeindustries.com](http://www.figurativeindustries.com)



[info@figurativeindustries.com](mailto:info@figurativeindustries.com)



Rangpura Road, Near Awan  
CommunityCenter, Sialkot, Pakistan



+92-332-0963253